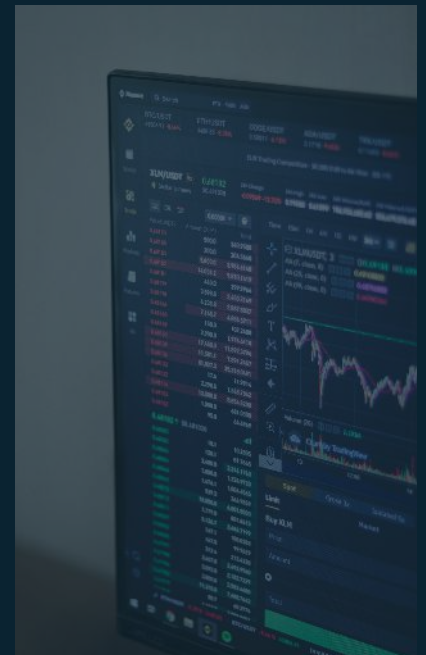


Chart-in-Focus

May 2026

Dividend
Leadership Is
Reasserting Itself;
Hints At Real
Economy
Resilience

Milan Vaishnav, CMT, MSTA



Welcome to **Chart-in-Focus**. This is a FREE monthly publication. To receive it in your mailbox, visit www.ChartWizard.ae

ChartWizard FZE, a part of Gemstone Equity Research and Advisory Services, delivers institutional-grade technical research designed for professional investors, family offices, and HNIs. Founded by [Milan Vaishnav, CMT, MSTA](#), our mission is to empower decision-makers with clarity, conviction, and alpha-focused strategies. Our flagship service, Market Pulse, provides in-depth, high-conviction research across U.S. equities, ETFs, and options—covering over 1,500 securities with disciplined, technical insight. In addition, we offer focused trading signals in Gold (XAUUSD) and Crude Oil, delivered selectively each month. These signals are designed for serious investors seeking precision and high-conviction opportunities in global commodities. ChartWizard stands for research that is independent, sophisticated, and built to serve those who demand an edge in today's markets.

Empowering Investment Professionals with Precision Research on US Equities & ETFs. Market Pulse – an



institutional-grade research service for U.S. equities and ETFs, designed exclusively for family offices, portfolio managers, and HNIs. Market Pulse combines top-down perspective, sector rotation insights, and disciplined technical analysis to deliver high-conviction, risk-



managed strategies.

MarketPulse_India - Independent research that unites allocation strategy with portfolio-ready instruments – designed exclusively for Family Offices. Our Family Office Research & Strategy Service delivers allocation clarity and portfolio-ready research – without execution, product-pushing, or conflicts of interest.



Dividend Leadership Is Reasserting Itself; Hints At Real Economy Resilience

There are times when a chart does not merely represent the movement of a security. It reflects a broader shift in market preference. The Vanguard High Dividend Yield ETF, VYM, appears to be at one such point.

At first glance, VYM is a straightforward dividend ETF. It tracks a basket of higher dividend paying U.S. companies and is often viewed as a relatively defensive equity allocation. However, the present technical setup deserves a deeper interpretation. The ETF is trading near a breakout zone after spending several weeks consolidating near higher levels. This development is taking place while U.S. bond yields remain elevated, inflation risks have not fully receded, and the Federal Reserve continues to keep policy restrictive.

This combination makes the chart important. If dividend equities are attempting to break out while the yield on the U.S. 10 year Treasury remains around the mid 4 percent area, the market may be sending a message that is more nuanced than simple income seeking. The move is not on about yield. It is about the preference for companies with durable cash flows, balance sheet strength, shareholder return discipline, and the ability to participate in nominal growth without carrying the valuation risk embedded in the most crowded areas of the market.

The chart of VYM, therefore, is not just a dividend chart. It is a chart of rotation.

The Technical Picture

VYM has maintained a steady primary uptrend over the past several months. The ETF has continued to trade above its key moving averages, with the 50 day, 100 day, and 200 day moving averages placed below the current price. This keeps the broader trend structure positive.

The price is now moving close to the upper end of its recent range. This area has acted as a supply zone, but the important observation is that the ETF has not given up meaningful ground after testing higher levels. The consolidation near the upper end of the range suggests that sellers have not been able to force a deeper retracement. When prices remain close to resistance for an extended period, the odds of an eventual breakout improve, provided the internal indicators support the move.



The short term support zone is now likely to be seen around the 50 day moving average, followed by the 100 day moving average. As long as VYM remains above these levels, the broader structure should be treated as healthy. The 200 day moving average is rising gradually, which confirms that the longer term trend remains intact.

The Parabolic SAR remains close to the price, and this reflects the short-term nature of the current consolidation. It also suggests that the ETF needs to follow through above the recent highs to confirm renewed upward momentum. Until that happens, the setup is best read as a breakout attempt, not yet a completed breakout.

Momentum Is Firm Without Being Overheated

The RSI is placed near 60. This is a useful reading. It shows that momentum remains positive, but the ETF is not overbought. A move above the 60 to 65 zone, along with a price breakout, would improve the quality of the signal. It would indicate that momentum is expanding along with price.

The MACD is flattening, and the histogram is close to neutral. This shows that momentum has cooled after the prior advance. This is not necessarily negative. In a healthy uptrend, consolidation phases often allow momentum indicators to reset before the next leg higher. The key is whether the MACD can turn higher again while price moves through resistance. If that happens, the breakout will carry better confirmation.

The OBV is among the stronger parts of the chart. It has continued to hold firm and has recently turned higher. This indicates that accumulation has not broken down. If price is close to resistance and OBV is improving, the setup usually deserves attention. Volume based confirmation is especially useful in dividend and factor oriented ETFs, where price moves are often gradual. The rising OBV suggests that participation has remained steady even during the consolidation.

Why This Setup Matters Now

The current market environment gives this chart its larger meaning.

The Federal Reserve kept the target range for the federal funds rate unchanged at 3.50 percent to 3.75 percent at its April meeting, while also stating that it would assess incoming data, the evolving outlook, and the balance of risks before making further adjustments. The minutes also showed that inflation remained above the 2 percent objective, helped in part by higher energy prices, while uncertainty around global developments remained elevated.

The bond market has also remained volatile. The U.S. 10 year Treasury yield was recently reported by FRED at 4.57 percent for May 20, 2026, after touching 4.67 percent on May 19. Reuters also reported that the 10 year yield had climbed to 4.69 percent, its highest level since January 2025, as stronger inflation data and mortgage related hedging intensified the selloff in Treasuries.

This is important because dividend equities often compete with bonds for investor attention. When bond yields are high, dividend equities do not automatically benefit. Investors can earn income through fixed income without taking equity risk. Therefore, if VYM is still pressing toward a breakout in this environment, the market is likely rewarding more than dividend yield alone.

The preference appears to be for equity income with participation. Investors may be seeking companies that can deliver cash returns while still benefiting from nominal growth, capital spending, energy strength, financial activity, and infrastructure demand.

VYM Is Not Just A Defensive Basket

The common mistake is to view VYM only as a defensive dividend product. It is more complex than that.

VYM is exposed to several areas of the market that sit at the intersection of income, value, cyclical, and real economy activity. The ETF includes large dividend paying companies across financials, industrials, energy, healthcare, consumer staples, utilities, and selected technology. Vanguard describes the fund as seeking to track a benchmark that measures the investment return of common stocks with high dividend yields.

This sector mix creates a useful market signal. If VYM breaks out, it may indicate that investors are comfortable owning a blend of defensives and cyclicals. Financials benefit from stronger nominal activity and a steeper yield environment, provided credit conditions remain stable. Energy companies benefit from firm commodity prices and disciplined capital allocation. Industrials benefit from infrastructure, defense, reshoring, and capital expenditure themes. Staples and healthcare provide the defensive ballast. Utilities have also acquired a new relevance because of rising electricity demand, especially from data centers and AI infrastructure.

This makes VYM a barbell. One side of the barbell is defensive cash flow. The other side is real economy participation.

The AI Link Is Indirect, But Relevant

The AI trade has been dominated by a narrow set of large growth names. However, the broader AI infrastructure cycle does not stop at semiconductor leaders. It also touches power demand, electrical equipment, data center infrastructure, networking, industrial capacity, utilities, and financing.

VYM is not a pure AI ETF, and it should not be presented as one. However, it can participate in the second order effects of the AI buildout through dividend paying technology names, industrial companies, utilities, and energy related exposure. This is a more conservative way of reading the AI theme. It is not about paying any price for growth. It is about owning parts of the infrastructure economy that may benefit from long duration capital spending while still maintaining cash return discipline.

That makes VYM relevant in a market where investors are increasingly aware of concentration risk. If growth leadership remains narrow, portfolios become vulnerable to any valuation reset in the largest names. A breakout in VYM would suggest that capital is also moving toward broader, cash generating areas of the market.

This would be a healthy development for overall market breadth.

The Macro Message From The Chart

The chart is pointing to three possible messages.

First, investors may be preparing for a longer period of elevated rates. In such an environment, companies that can fund themselves internally and return cash to shareholders become more attractive. Balance sheet quality and cash generation matter more when capital is no longer freely available.

Second, investors may be hedging against sticky inflation. Dividend paying companies in energy, staples, utilities, and industrials may offer better resilience in nominal growth environments than long duration growth assets. They may not be immune to volatility, but their earnings profiles can be more stable.

Third, investors may be rotating toward equity exposure with lower valuation risk. This does not mean abandoning growth. It means adding exposure to areas where earnings, dividends, and cash flows can carry more of the return expectation.

This is why the VYM chart should be watched closely. A breakout would not simply be a technical event. It would confirm a broader shift in preference toward quality income, cash flow durability, and wider market participation.

Levels To Watch

The immediate area to watch is the recent high near the 157 to 158 zone. A sustained move above this band would confirm a breakout attempt. Ideally, such a move should be accompanied by continued improvement in OBV and a subsequent positive turn in MACD, as that is a lagging indicator, as opposed to OBV.

On the downside, the first area of support lies near the 50 day moving average. Below that, the 100 day moving average becomes important. A move below these levels would weaken the short term structure, though the broader trend would remain protected as long as the ETF holds above the rising 200 day moving average.

The risk in the present setup is a failed breakout. If price moves briefly above resistance and then returns quickly into the prior range, it would suggest that supply remains active. In that case, the ETF may require more time before attempting another move higher.

However, until such weakness appears, the benefit of doubt remains with the bulls.

Takeaway

VYM is at an important technical point. The ETF is trading close to breakout levels, holding above key moving averages, supported by firm and rising OBV, and carrying momentum that is positive. This is the type of setup that deserves attention because it has both technical and macro relevance.

The larger story is that the market may be rotating toward companies that combine dividend discipline, durable cash flows, and real economy participation. In an environment of elevated bond yields, uncertain inflation, geopolitical risk, and stretched concentration in select growth names, this is a rational shift.

The larger story is that the market may be rotating toward companies that combine dividend discipline, durable cash flows, and real economy participation. In an environment of elevated bond yields, uncertain inflation, geopolitical risk, and stretched concentration in select growth names, this is a rational shift.

For now, VYM remains one of the more important charts to watch. Its breakout, if confirmed, may tell us that the next phase of the market is not only about growth leadership. It may also be about cash flow leadership.

Milan Vaishnav, CMT, MSTA,

Technical Analyst,

Member: (CMT Association, USA | Society of Technical Analysts, (STA), UK | (Research Analyst, SEBI Reg. No. INH000003341)



Disclaimer and Disclosures

Disclosure pursuant to Clause 19 of SEBI (Research Analysts) Regulations 2014: The analyst, Family Members, or his Associates holds no financial interest below 1% or higher than 1% and has not received any compensation from the Companies discussed. The securities discussed and opinions expressed in this report may not be suitable for all investors, who must make their own investment decisions, based on their own investment objectives, financial positions, and needs of specific recipients. This may not be taken in substitution for the exercise of independent judgment by any recipient. The recipient should independently evaluate the investment risks. The value and return on investment may vary because of changes in interest rates, foreign exchange rates, or any other reason. Past performance is not necessarily a guide to future performance. The usage of the Research Reports and other Services are governed as per the Terms of Service at <https://www.chartwizard.ae/terms-of-use/> The Research Analyst has not managed or co-managed the issues of any of the companies discussed and has not received any such remuneration from such activities from the companies discussed. The Research Analyst has not received any remuneration from the Merchant Banking activities. The Research Analyst has adopted an independent approach without any conflict from anyone. The Research Analyst has not received any compensation or other benefits from the companies mentioned in the report or third parties in connection with the preparation of the research report. Compensation of the Research Analysts is not based on any specific merchant banking, investment banking, or brokerage service transactions. The Research Analyst is not engaged in a market-making activity for the companies mentioned in the report. The Research Analyst submits that no material disciplinary action has been taken on him by any Regulatory Authority impacting Equity Research Analysis activities. This report is not directed or intended for distribution to, or use by, any person or entity who is a citizen or resident of or located in any locality, state, country, or other jurisdiction, where such distribution, publication, availability, or use would be contrary to law, regulation or which would subject the Research Analyst to any registration or licensing requirement within such jurisdiction.